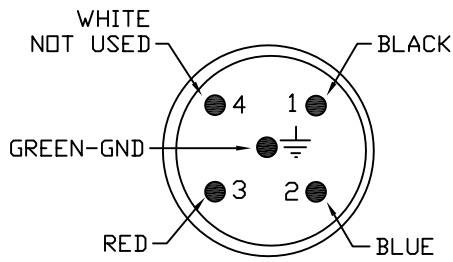
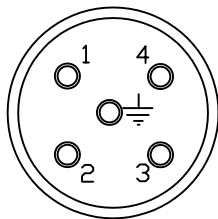


# HIGH VOLTAGE 5 PIN CONNECTOR



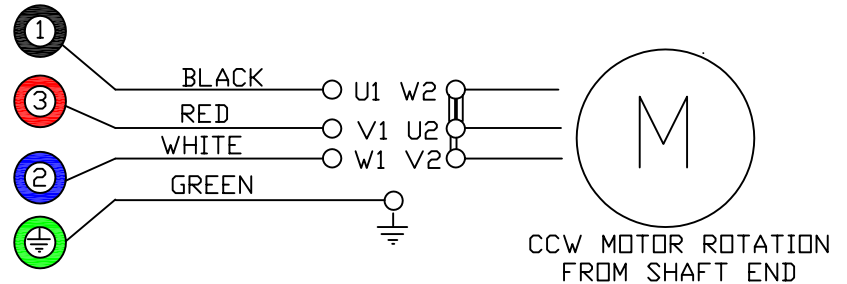
CONNECTOR FACE VIEW



VIEW FROM CABLE SIDE

RECEPTACLE: MELTRIC 33-18047-NNF  
HOUSING - MELTRIC FH-111

BLACK-LINE 1  
WHITE-LINE 2  
RED-LINE 3  
GREEN-GROUND

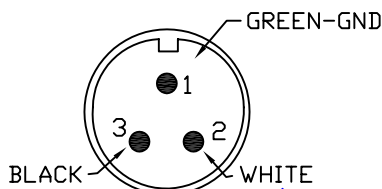


200-415 VAC 50 HZ - 230-460 VAC 60 HZ  
WIRING TO NE 60204-1 STD Y CONFIGURATION

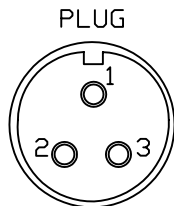
# MOTOR CIRCUIT

# LOW VOLTAGE 3 PIN CONNECTOR

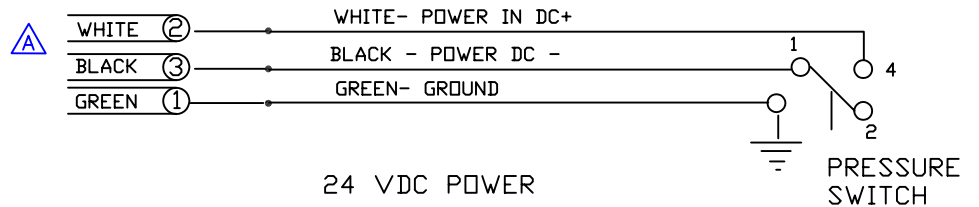
PLUG W/CABLE- BRADCONNECTIVITY 103002A01F100



CONNECTOR FACE VIEW



VIEW FROM CABLE SIDE



24 VDC POWER

PRESSURE SWITCH

# WARNING LIGHT CIRCUIT

DWG. TITLE 810-050 WIRING		HTI FILTRATION		810-050 WIRING SCHEMATIC				
PROJECT DESCRIPTION STOLLE EQUIPMENT STANDARD 3 PHASE FILTER		11820 WESTERN AVE. STANTON, CA 90680		A	04-15-08	SP	SP	DC VOLTAGE WIRING CHANGE
DRAWING NO. 810-050 WS		REVISION A	CUST. CONTR. NO. -	0	03-15-08	SP	SP	ORIGINAL ISSUE
				REV.	DATE:	DRWN BY	CHKD BY	DESCRIPTION
				CUSTOMER STOLLE EQUIPMENT				