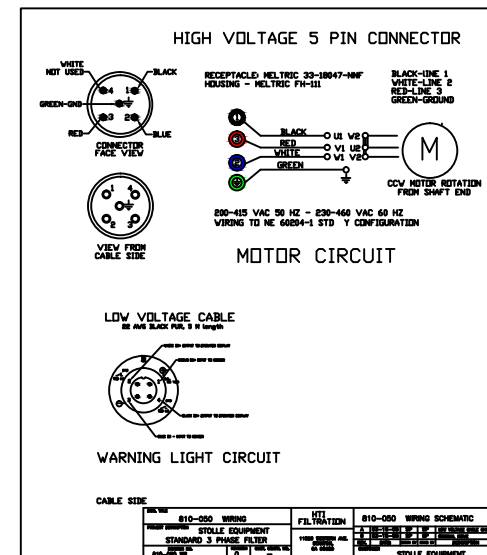


### BILL OF MATERIAL

NO. REQD.	ITEM NO.	DESCRIPTION	HTI NO	STOLLE NO
-	1	PRESSURE GAUGE	610-010	089699
-	2	LID SEAL	450-002	089879
-	3	H411-B6L ELEMENT	800-026	088279
-	4	FLOW METER	630-006	-
-	5	MOTOR 3 PHASE 50/60 HZ CE/IEC	780-024	094970
-	6	1.5 GPM / 5.25 LPM PUMP	770-015	090126
-	7	PRESSURE SWITCH W/LED	620-004	-
-	8	HIGH VOLTAGE PLUG-33-18047	260-034	222000311
-	9	PLUG HOUSING FH-111	260-035	222000313
	10	PUMP OULET HOSE	420-029	094971
	11	PRESSURE RELIEF HOSE	420-030	094972
-	12			
	13	METRIC MOTOR PUMP ADAPTER	790-009	089915
	14	PUMP SEAL REPAIR KIT	460-057	095057
	15	RIGHT ANGLE CONNECTOR/CORD	620-007	-
	16	CLEAR SWITCH COVER	620-006	-



INLET AND OUTLET HOSE ADAPTERS ARE BOTH 3/4" JIC 37 DEG FITTINGS

DWG. TITLE HS410-C2-B6L-C50/60 CE/IEC		HTI FILTRATION		810-050.2 CE/IEC			
PROJECT DESCRIPTION STOLLE NO. 724235 BODYMAKER OIL FILTER		11820 WESTERN AVE. GARDEN GROVE, CA 90680		0	11/14/12	SP	SP
DRAWING NO. 810050.2PL	REVISION F	CUST. CONTR. NO. -		REV.	DATE:	DRWN BY	CHKD BY
				CUSTOMER STOLLE MACHINERY			
				ORIGINAL ISSUE DESCRIPTION			